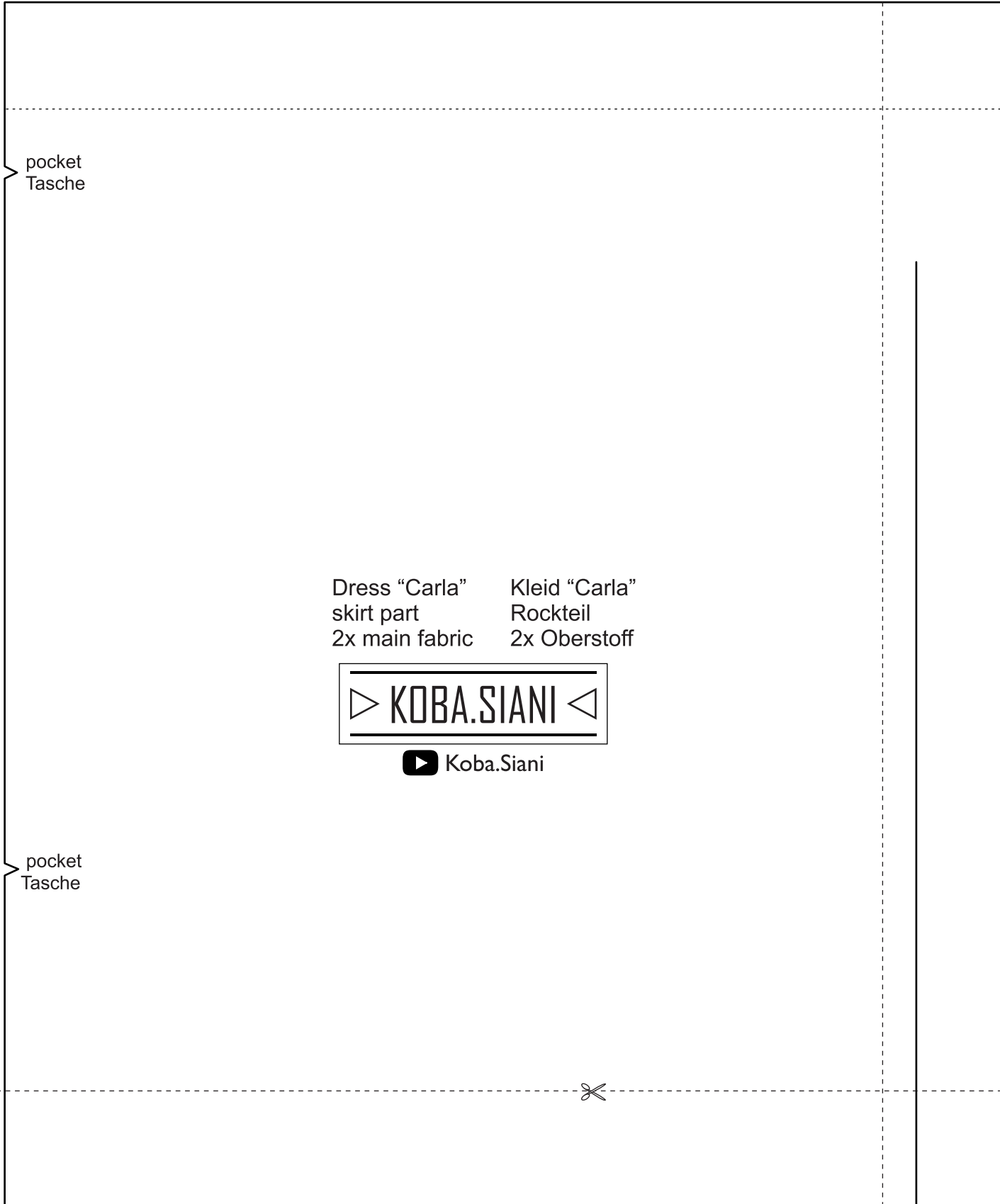


1a

1a

1c



pocket
Tasche

pocket
Tasche

Dress "Carla"	Kleid "Carla"
skirt part	Rockteil
2x main fabric	2x Oberstoff



 Koba.Siani

1a

1b



1a

1b



Kleid "Carla"
alle Nahtzugaben
bereits inklusive

1b

Saum Nahtzugabe: 2x 0,75 cm

hem seam al

1b

1d

Dress "Carla"
all seam allowances
are already included

5 cm

1a

1c

1c

fold here for lining
hier für Futter falten

vordere/ hintere Mitte/ Bruch

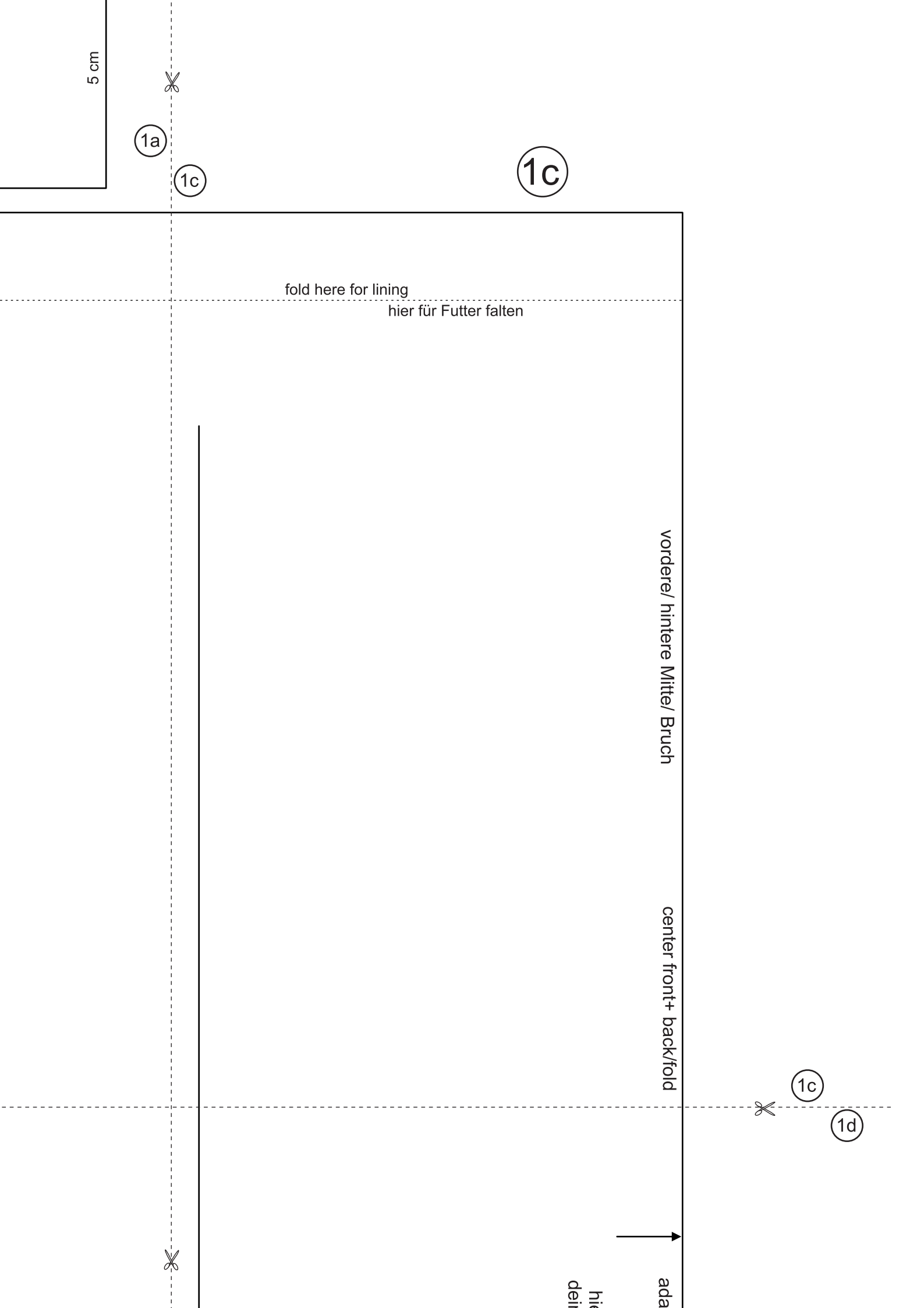
center front+ back/fold

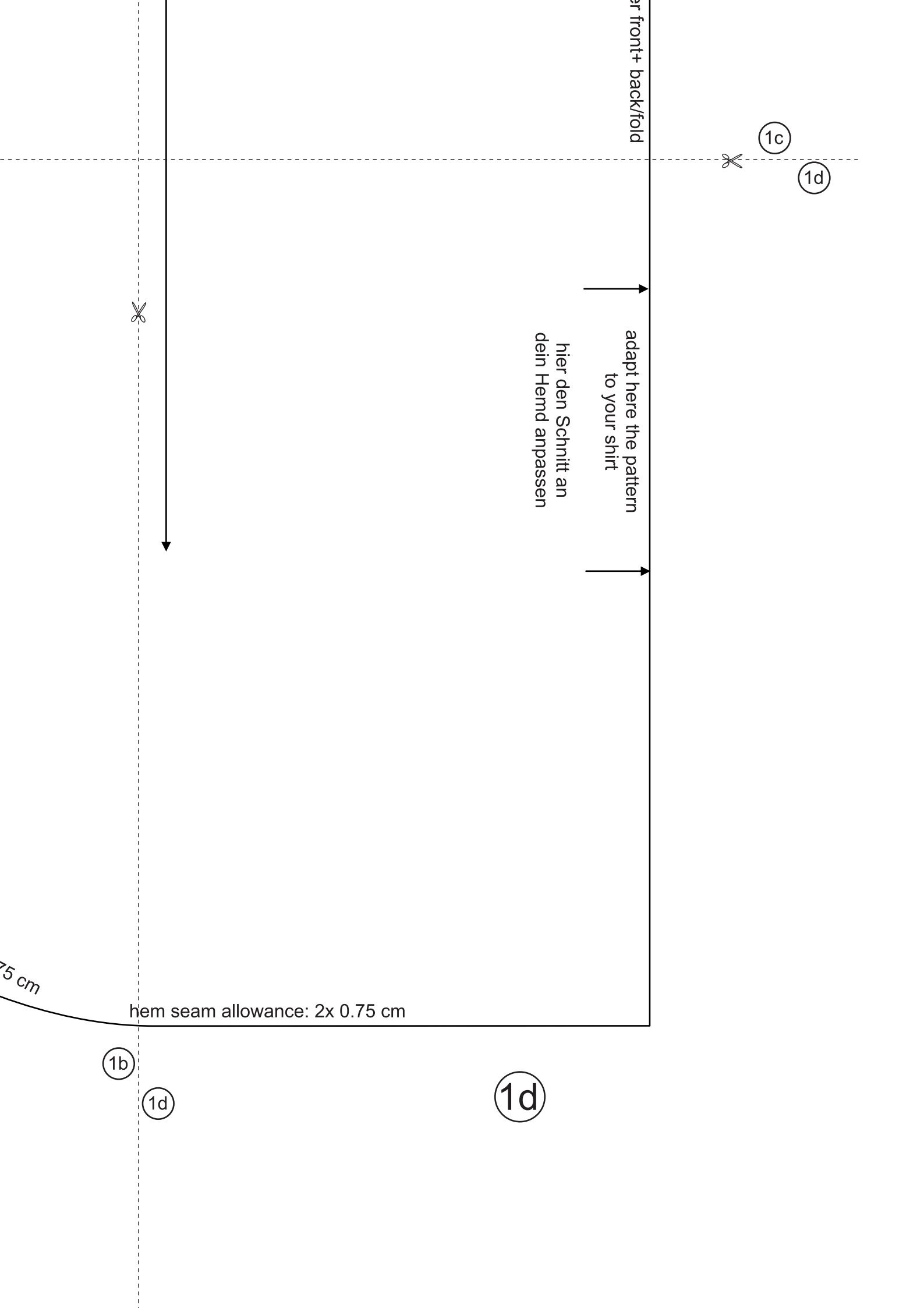
1c

1d

hier
dein

ada





Dress "Carla"	Kleid "Carla"
pocket flap	Taschenklappe
2x main fabric	2x Oberstoff
2x shirt fabric	2x Hemdenstoff
2x interlining	2x Vlieseinlage



Koba.Siani

2

pocket pos. from highest shoulder point:
 Taschenpos. v. höchstem Schulterpunkt:
 ~ 23-26 cm

pocket pos. from center front:
 Taschenpos. v. vord. Mitte:
 ~ 6-7 cm

Dress "Carla"	Kleid "Carla"
breast pocket	Brusttasche
1x or 2x main fabric	1x oder 2x Oberstoff



Koba.Siani

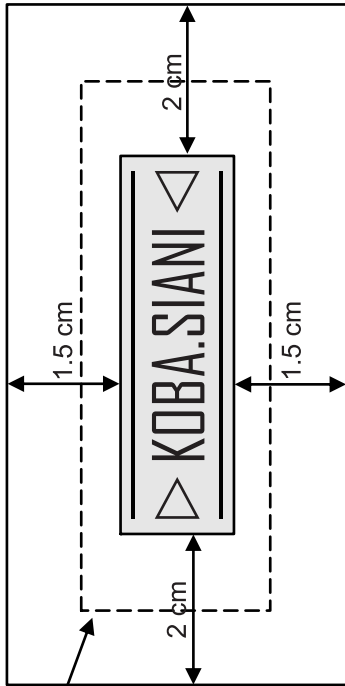
3

Dress "Carla" Dress "Carla"
sleeve bar Ärmelriegel
2x main fabric 2x Oberstoff
2x interlining 2x Vlieseinlage



 Koba.Siani

seam allowance
Nahtzugabe



4a

Dress "Carla"
example for label base
1x main fabric
Please adapt to your label size!

Kleid "Carla"
Beispiel für Label- Unterlage
1x main fabric
Bitte passt dies an eure Labelgröße an!

end of seam
Nahtende

Dress "Carla"
pocket bag
4x in shirt
fabric

Kleid "Carla"
Taschenbeutel
4x Hemden-
stoff

4a

4b



Dress "Carla"
Kleid "Carla"
pocket bag
Taschenbeutel
4x in shirt
4x Hemden-
stoff



 Koba.Siani

4a

4b

end of seam
Nahtende

4b